



**BROST**  
ARCHITECTS & PLANNERS LTD  
1000 CONCORDIA DRIVE  
MONROE, LA 70001  
NEW ORLEANS, LA 70112  
CEDAR RAPIDS, IA 52401  
PH: 504.335.5500  
FAX: 504.335.5501  
www.brostarchitects.com

THIS DRAWING IS THE PROPERTY OF BROST ARCHITECTS & PLANNERS LTD. IT IS TO BE USED ONLY FOR THE PROJECT AND SITE SPECIFICALLY IDENTIFIED HEREIN. ANY REUSE OR MODIFICATION OF THIS DRAWING WITHOUT THE WRITTEN CONSENT OF BROST ARCHITECTS & PLANNERS LTD. IS STRICTLY PROHIBITED. THE USER OF THIS DRAWING SHALL BE RESPONSIBLE FOR OBTAINING ALL NECESSARY PERMITS AND REGULATORY APPROVALS. BROST ARCHITECTS & PLANNERS LTD. ACCEPTS NO LIABILITY FOR ANY DAMAGE, LOSS, OR INJURY, INCLUDING CONSEQUENTIAL DAMAGES, ARISING FROM THE USE OF THIS DRAWING. NOTICE: COPYRIGHT © 2006

**PROPOSED ADDITION AND RENOVATION**  
CENTRAL LUTHERAN SCHOOL  
310 3rd STREET WEST  
NEWHALL, IOWA 52315

CONSULTANT

REVISION DATES

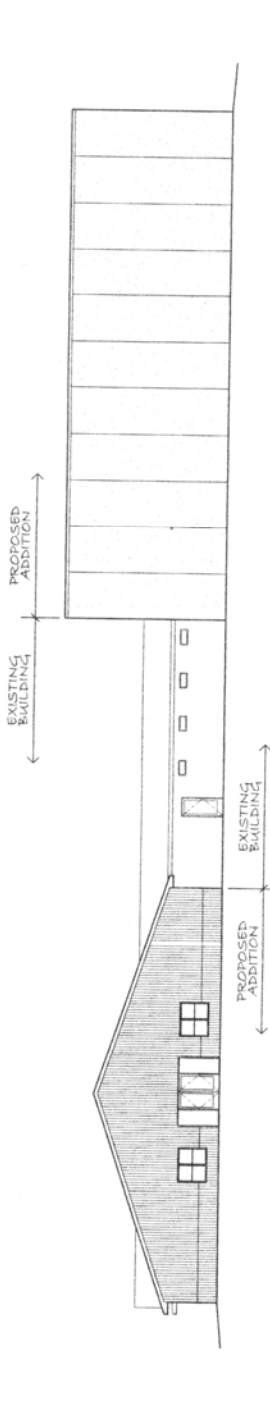
1	
2	
3	
4	

DATE: 05/24/06  
PROJECT NUMBER: 0604  
DRAWN BY: BLM  
CHECKED BY: DJB

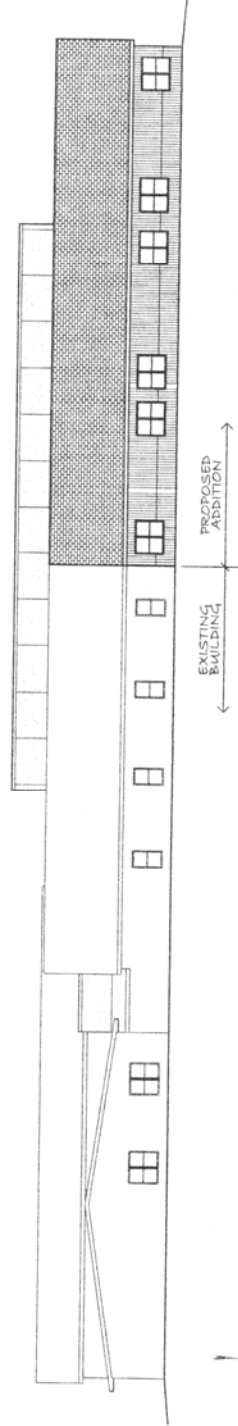
PROPOSED EXTERIOR ELEVATIONS  
SHEET NUMBER: **A2.1**

EXISTING BUILDING	= 16,975 SF
PROPOSED ADDITION	= 16,815 SF
TOTAL	= 33,790 SF

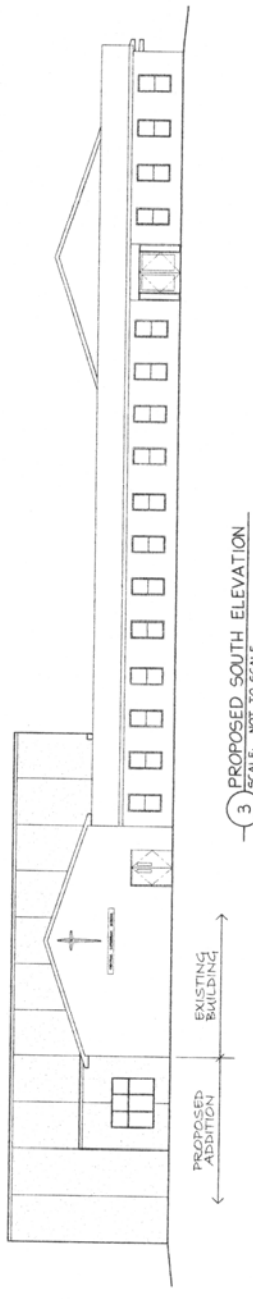
**SCHEMATIC DESIGN PHASE**



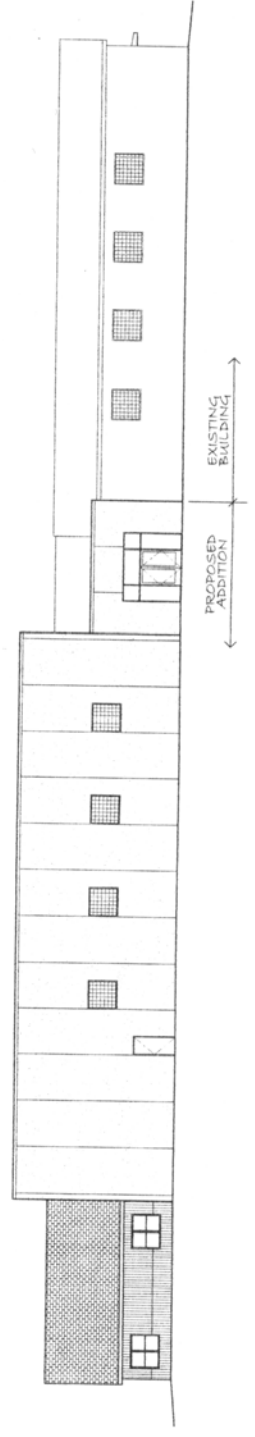
1 PROPOSED NORTH ELEVATION  
SCALE: NOT TO SCALE



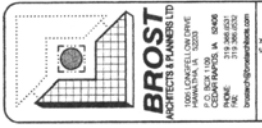
2 PROPOSED EAST ELEVATION  
SCALE: NOT TO SCALE



3 PROPOSED SOUTH ELEVATION  
SCALE: NOT TO SCALE



4 PROPOSED WEST ELEVATION  
SCALE: NOT TO SCALE



NOTICE: THIS PLAN IS PREPARED BY THE ARCHITECT AND IS SUBJECT TO CONTRACT. THE ARCHITECT'S RESPONSIBILITY IS LIMITED TO THE DESIGN OF THE BUILDING AND ITS STRUCTURE. THE ARCHITECT DOES NOT WARRANT THE ACCURACY OF ANY INFORMATION PROVIDED BY OTHERS. THE ARCHITECT IS NOT RESPONSIBLE FOR THE DESIGN OF ANY MECHANICAL, ELECTRICAL, OR PLUMBING SYSTEMS. THE ARCHITECT IS NOT RESPONSIBLE FOR THE DESIGN OF ANY LANDSCAPE OR SITEWORK. THE ARCHITECT IS NOT RESPONSIBLE FOR THE DESIGN OF ANY SPECIALTY MATERIALS OR FINISHES. THE ARCHITECT IS NOT RESPONSIBLE FOR THE DESIGN OF ANY SPECIALTY EQUIPMENT OR FIXTURES. THE ARCHITECT IS NOT RESPONSIBLE FOR THE DESIGN OF ANY SPECIALTY LIGHTING. THE ARCHITECT IS NOT RESPONSIBLE FOR THE DESIGN OF ANY SPECIALTY SOUNDING. THE ARCHITECT IS NOT RESPONSIBLE FOR THE DESIGN OF ANY SPECIALTY SECURITY. THE ARCHITECT IS NOT RESPONSIBLE FOR THE DESIGN OF ANY SPECIALTY TRANSPORTATION. THE ARCHITECT IS NOT RESPONSIBLE FOR THE DESIGN OF ANY SPECIALTY UTILITIES. THE ARCHITECT IS NOT RESPONSIBLE FOR THE DESIGN OF ANY SPECIALTY WATER. THE ARCHITECT IS NOT RESPONSIBLE FOR THE DESIGN OF ANY SPECIALTY WASTE. THE ARCHITECT IS NOT RESPONSIBLE FOR THE DESIGN OF ANY SPECIALTY WEATHER. THE ARCHITECT IS NOT RESPONSIBLE FOR THE DESIGN OF ANY SPECIALTY WIND. THE ARCHITECT IS NOT RESPONSIBLE FOR THE DESIGN OF ANY SPECIALTY WINDSPEED. THE ARCHITECT IS NOT RESPONSIBLE FOR THE DESIGN OF ANY SPECIALTY WINDDIRECTION. THE ARCHITECT IS NOT RESPONSIBLE FOR THE DESIGN OF ANY SPECIALTY WINDVARIATION. THE ARCHITECT IS NOT RESPONSIBLE FOR THE DESIGN OF ANY SPECIALTY WINDPULSE. THE ARCHITECT IS NOT RESPONSIBLE FOR THE DESIGN OF ANY SPECIALTY WINDGUST. THE ARCHITECT IS NOT RESPONSIBLE FOR THE DESIGN OF ANY SPECIALTY WINDSTORM. THE ARCHITECT IS NOT RESPONSIBLE FOR THE DESIGN OF ANY SPECIALTY WINDTORNADO. THE ARCHITECT IS NOT RESPONSIBLE FOR THE DESIGN OF ANY SPECIALTY WINDHURRICANE. THE ARCHITECT IS NOT RESPONSIBLE FOR THE DESIGN OF ANY SPECIALTY WINDTYPHOON. THE ARCHITECT IS NOT RESPONSIBLE FOR THE DESIGN OF ANY SPECIALTY WINDTROPIC. THE ARCHITECT IS NOT RESPONSIBLE FOR THE DESIGN OF ANY SPECIALTY WINDWINTER. THE ARCHITECT IS NOT RESPONSIBLE FOR THE DESIGN OF ANY SPECIALTY WINDSUMMER. THE ARCHITECT IS NOT RESPONSIBLE FOR THE DESIGN OF ANY SPECIALTY WINDSPRING. THE ARCHITECT IS NOT RESPONSIBLE FOR THE DESIGN OF ANY SPECIALTY WINDFALL. THE ARCHITECT IS NOT RESPONSIBLE FOR THE DESIGN OF ANY SPECIALTY WINDWINTER. THE ARCHITECT IS NOT RESPONSIBLE FOR THE DESIGN OF ANY SPECIALTY WINDSUMMER. THE ARCHITECT IS NOT RESPONSIBLE FOR THE DESIGN OF ANY SPECIALTY WINDSPRING. THE ARCHITECT IS NOT RESPONSIBLE FOR THE DESIGN OF ANY SPECIALTY WINDFALL.

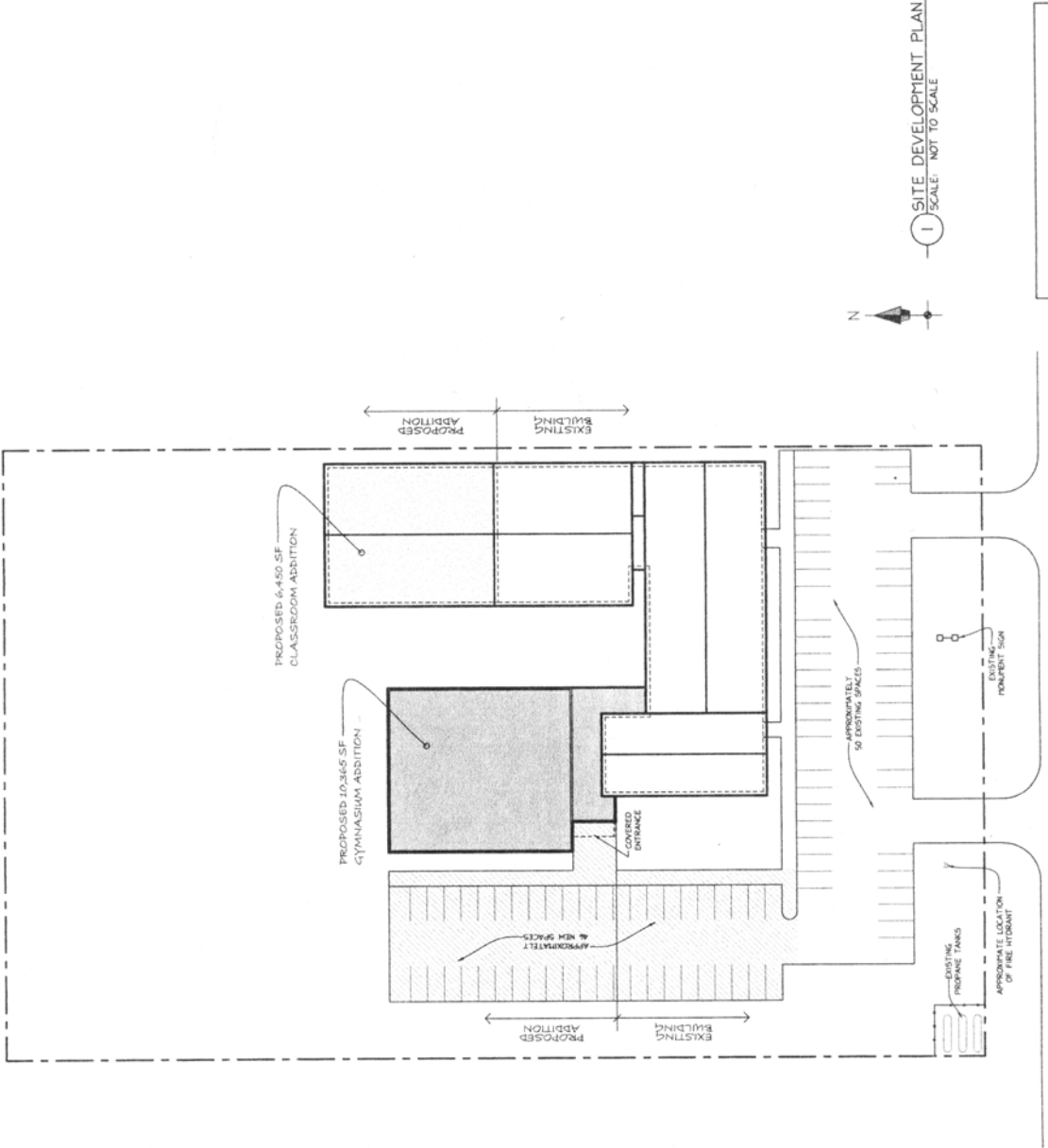
**PROPOSED ADDITION AND RENOVATION**  
CENTRAL LUTHERAN SCHOOL  
310 3rd STREET WEST  
NEWHALL, IOWA 52315

CONSULTANT

REVISION DATES
1
2
3
4
5
6

DATE: 05/24/06  
PROJECT NUMBER: 0604  
DRAWN BY: BLW  
CHECKED BY: DUB

SITE DEVELOPMENT PLAN  
SHEET NUMBER  
**SD1**



1 SITE DEVELOPMENT PLAN  
SCALE: NOT TO SCALE

EXISTING BUILDING	= 16,975 SF
PROPOSED ADDITION	= 16,815 SF
TOTAL	= 33,790 SF

**SCHEMATIC DESIGN PHASE**